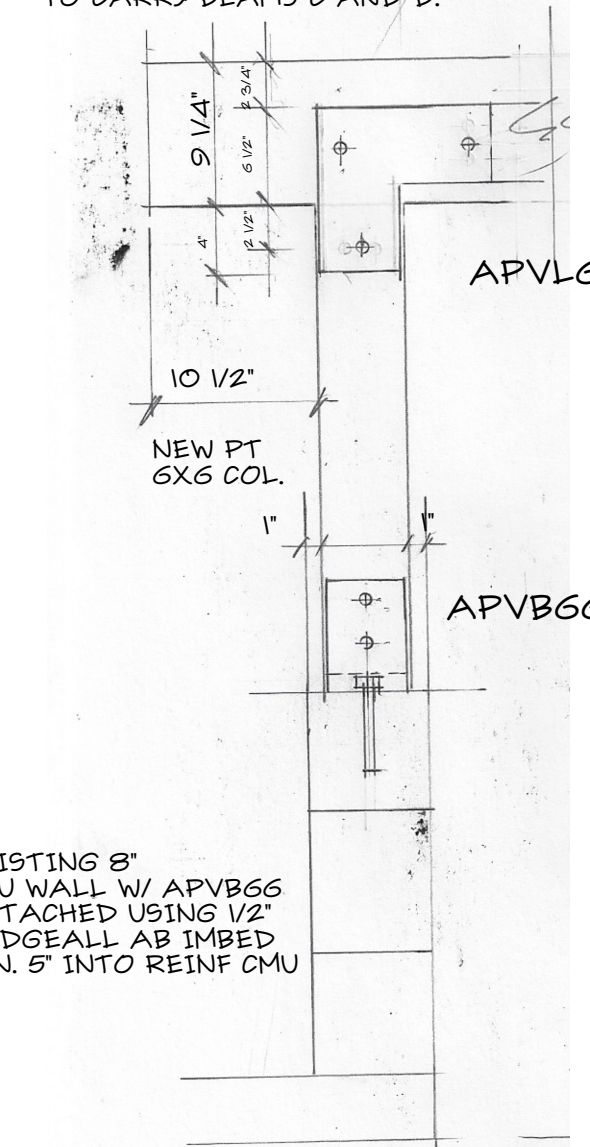


**HU48 OR HUC48 @ (4) CORNERS**  
1"= 1'-0"

HANGERS FACEMOUNT TO BEAMS A, B, F & G TO CARRY/ATTACH BEAMS C AND D

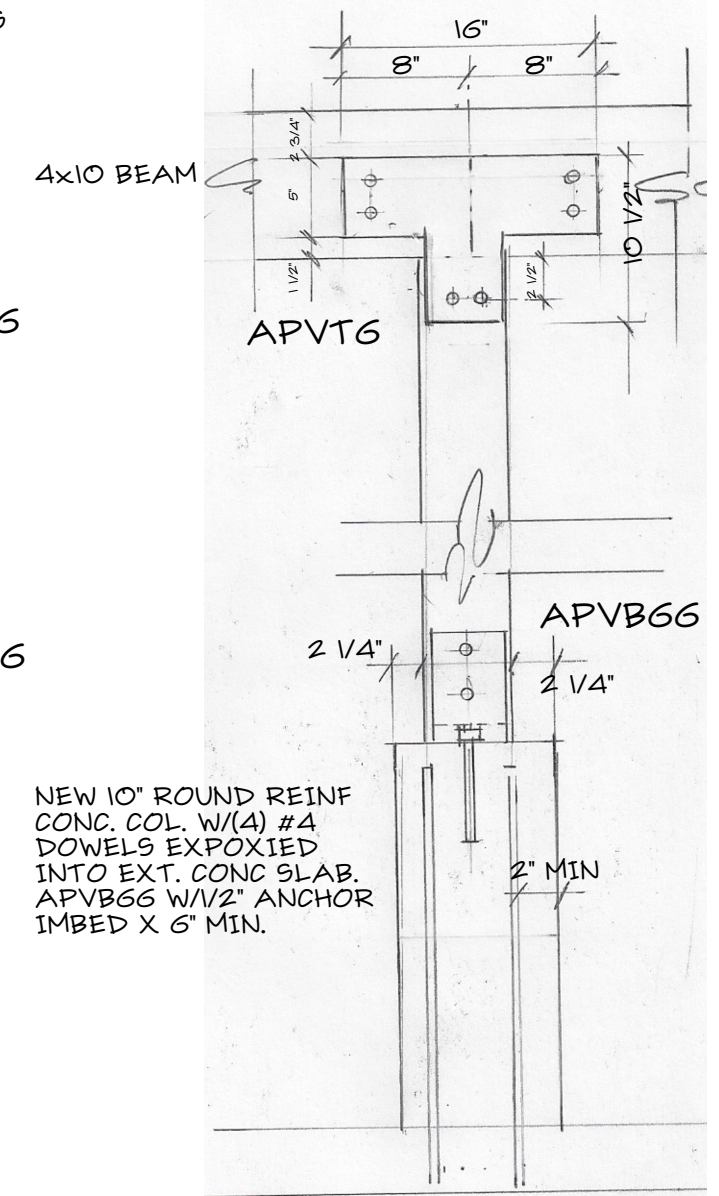
APVL6 FACEMOUNT TO EXTERIOR FACES OF BEAMS A & B AND F & G TO TIE THE BEAMS TO THEIR SUPPORTING COLUMNS. CONCEALED OR FLANGED FACEMOUNT HANGERS ARE INSTALLED ON OPPOSITE SIDES TO CARRY BEAMS C AND D.



**APVL6 and APVB66**  
1"= 1'-0"

NORTHWEST CORNER SHOWN

APVT6 FACEMOUNT TO EXTERIOR FACES OF BEAMS A & B AND F & G TO TIE THE BEAMS TOGETHER AT THEIR INTERSECTIONS AND SECURE TO THEIR SUPPORT COLUMNS



**APVT6 and APVB66**  
1"= 1'-0"

**BEAM NOTES:**

WITH FEW EXCEPTIONS, BEAMS SHOWN HAVE MORE THAN AMPLE CAPACITY TO CARRY IMPOSED ROOF LOADS. BEAMS HAVE GENERALLY BEEN CHOSEN TO PROVIDE CONTINUITY IN FRAMING FOR DESIGN PURPOSES.

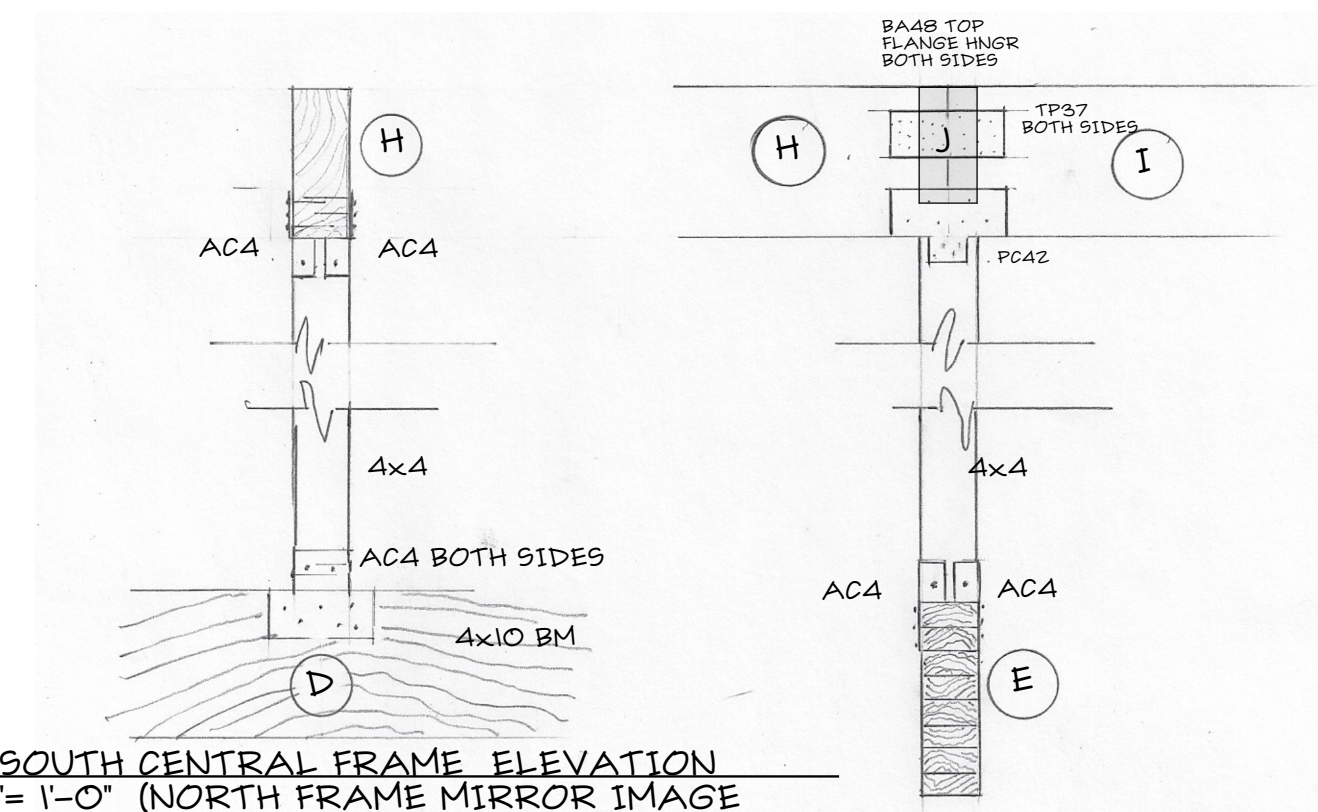
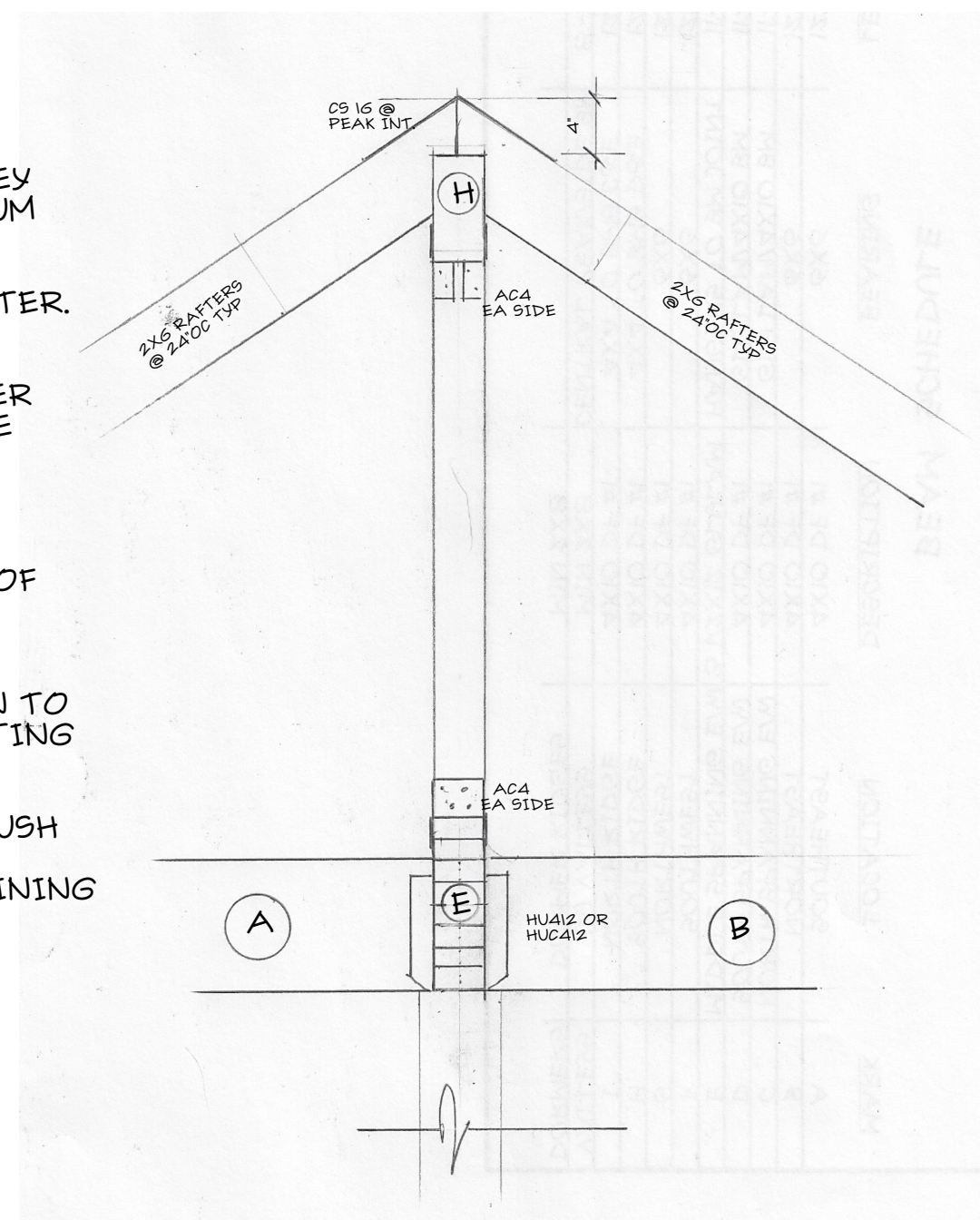
WHILE BEAM CALCULATIONS INDICATE THAT A 2X8 VALLEY RAFTER IS ADEQUATE TO CARRY LOADS, IT IS THE MINIMUM SUITABLE GIVEN THE VERTICAL PLUMB CUT DEPTH OF 2X6 RAFTERS FRAMING TO IT SUCH THAT RAFTER TAILS DO NOT PROJECT BELOW THE BOTTOM OF THE VALLEY RAFTER. CONSIDERATION OF USING A 2X10 IS SUITABLE.

A 4X8 IS SHOWN AT THE EAST/WEST DIRECTIONAL DORMER RIDGES. CALCULATIONS INDICATE THIS MEMBER MIGHT BE PROVIDED WITH A 2X10, WHICH WOULD BE SUITABLE IF ACCEPTABLE TO THE CLUB'S DESIGN REVIEW COMMITTEE. AS NOTED ELSEWHERE, THINGS GET A BIT BUSY AT THE CENTRAL RIDGE PEAK WITH NUMEROUS CONNECTIONS, SUCH THAT THE ONLY FEASIBLE HANGER TYPE FOR USE IS OF THE TOP FLANGE HANGER VARIETY, AND A 2X VERSUS 4 X HANGER MIGHT ALLOW AN EASIER INSTALLATION.

FOR EASE OF FRAMING, CONSIDERATION SHOULD BE GIVEN TO ATTACHING VALLEY RAFTERS TO "BEAMS J" PRIOR TO SETTING BEAMS "J" INTO HANGERS AT THE RIDGE.

BEAMS "A", "B", "F" AND "G" ARE INTENDED TO BE FRAMED FLUSH TO THE EXTERIOR FACES OF SUPPORT COLUMNS. BEAMS "C" AND "D" ARE MEANT TO BE SET ATOP THE REMAINING 2" OF SUPPORT COLUMNS IN HANGERS AFIXED TO PERPENDICULAR BEAM (A, B, F AND G).

BEAM "E" IS INTENDED TO BE SET ON THE 2" REMAINING ATOP SUPPORT COLUMNS, WITH ITS TOP SURFACE HIGHER THAN PERPENDICULARLY PLACED BEAM MEMBERS.



SHEET TITLE:  
**FRAMING DETAILS / NOTES**

PROJECT DESCRIPTION:  
TREASURE ISLAND BEACH CABANA  
660 E. TREASURE ISLAND DRIVE  
ALLYN, WA 97524

TREASURE ISLAND COUNTRY CLUB

DATE:  
11-18-2022

SCALE:

SHEET:

A-1